

PT ASAHI SYNCHROTECH INDONESIA

To Be The Company Chosen by Challenge & Creation



Company Overview

Since 1991



200+

Projects Completed

100+

Skilled Professionals

150+

Client Served

30+

Years of Experiences

Founded as Mekar Intidian Corporation in 1991 and rebranded as PT Asahi Synchrotech Indonesia in 1999, we are a leading mechanical and electrical engineering contractor backed by the expertise and support of Asahi Synchrotech Corporation (Japan) and TOENEC. With a team of 108 skilled professionals, including designers, project managers, and engineers from Indonesia, Japan, and the Philippines, we deliver precision-driven solutions that enhance productivity and contribute to Indonesia's growth.

Our engineering division is equipped with specialists in both mechanical and electrical disciplines, ensuring meticulous design and execution from concept to completion. Supported by a robust construction division and a dedicated safety & quality team, we manage complex projects with a commitment to excellence.

Our ownership structure underscores our strong international ties, with Asahi Synchrotech Corporation holding our main shares, reflecting our deep-rooted connection to Japanese engineering excellence.



Vision

Asahi Synchrotech Indonesia, as an engineering company delivering highly productive projects, contributes to the development of Indonesia. We continually provide sustainable corporate value to our customers, employees, and suppliers.

#1 Exceeding Expectations with Speed

Deliver faster valuable information that exceeds customer expectations.

#1 Quality Through Collaboration

Collaborate with various suppliers and vendors to provide consistent quality to customers.

#1 Optimizing Projects from the Start

Starting from upstream project planning to provide more optimal and faster solutions.

#1 Fostering a Culture of Discipline

Cultivating high discipline in the company.

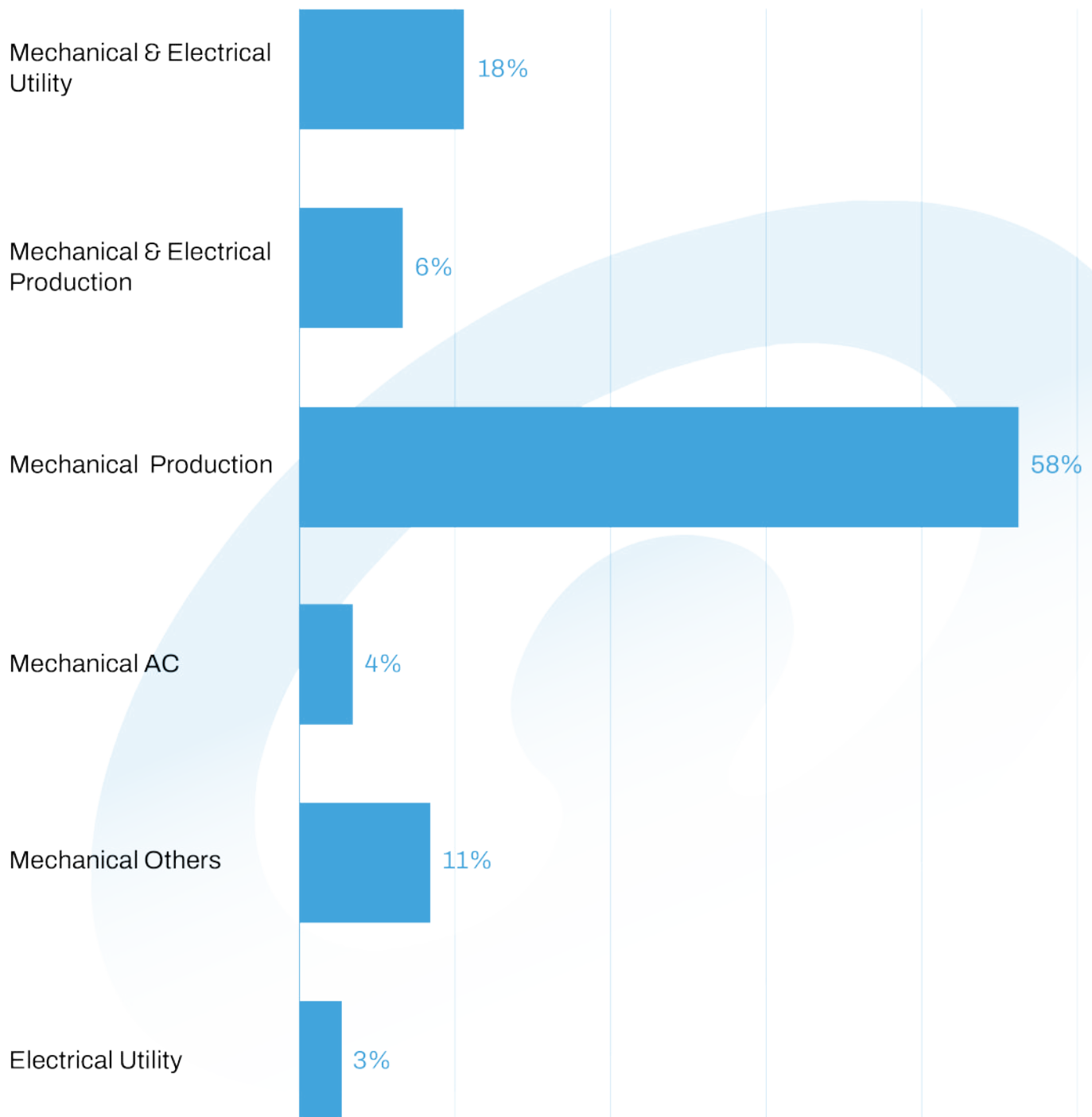
Management

Meet the leadership team that ensuring the successful execution of every project through strategic planning, and a commitment to operational excellence.



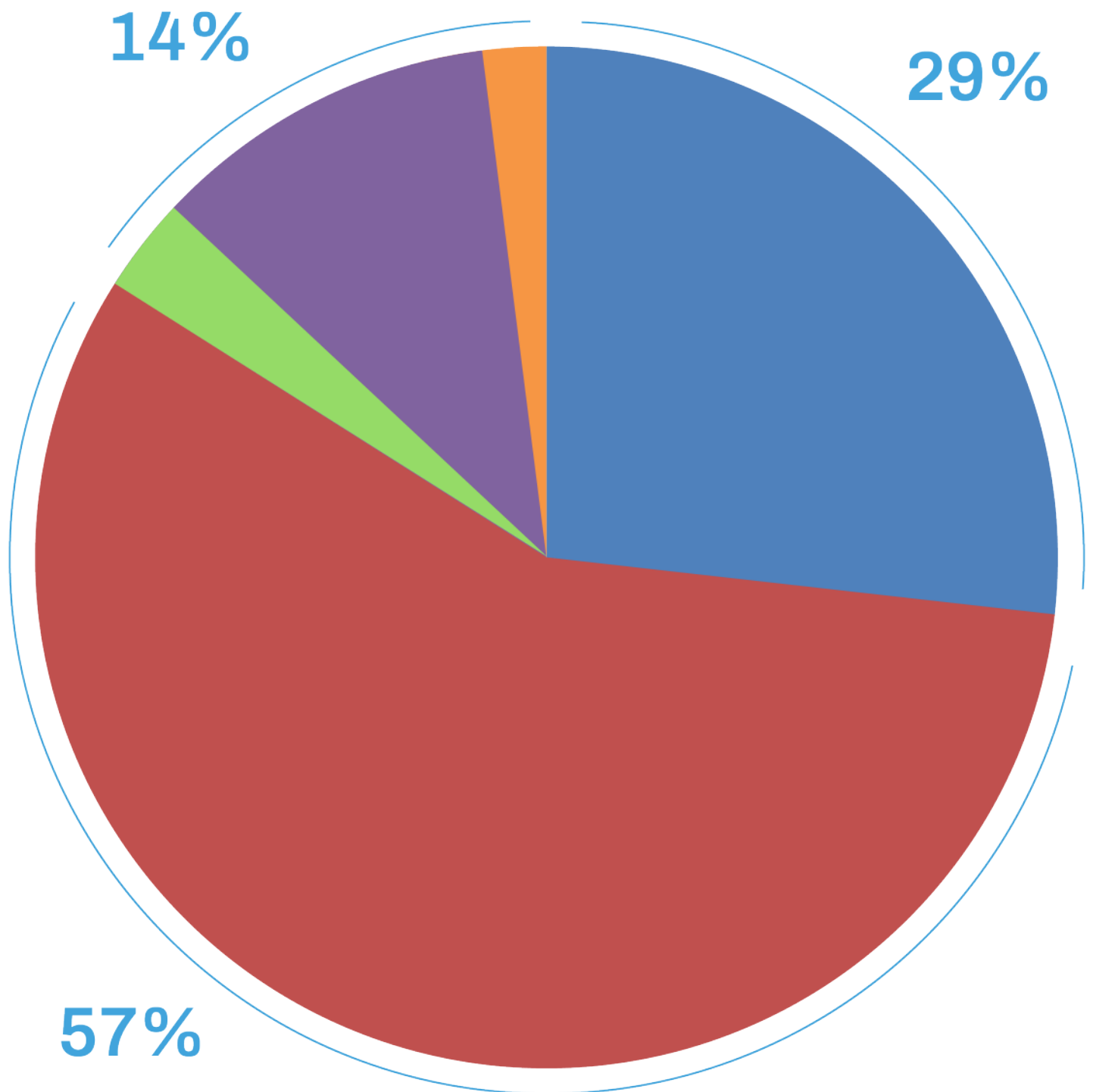
Construction Results

2023-2025



Business Segment

Industry Segment
2023-2025



14%

Others (Machinery & Electrical, Automobile Part & Glass Material Plant)

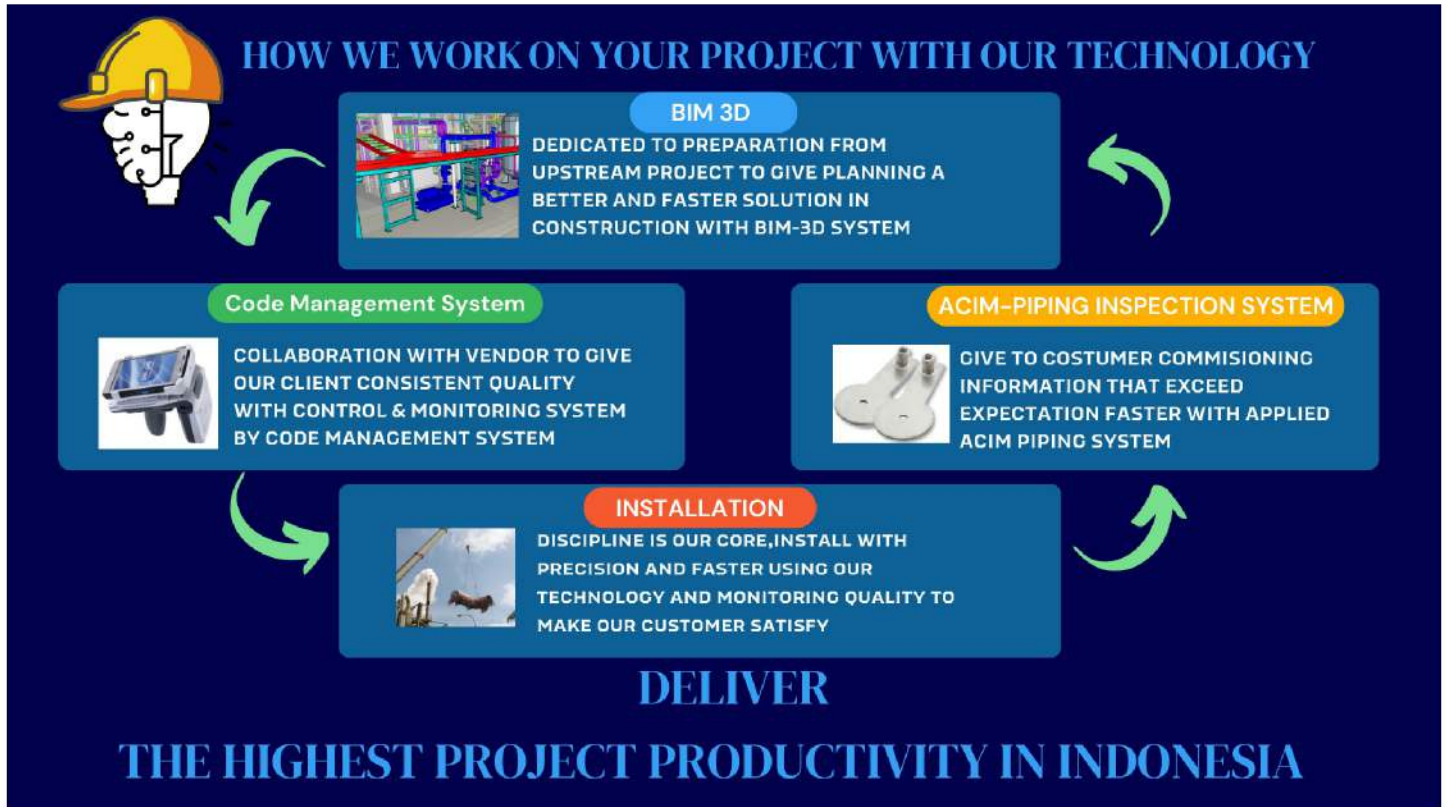
29%

Food & Beverage

57%

Chemical Plant & Basic Metal

Technology



Services



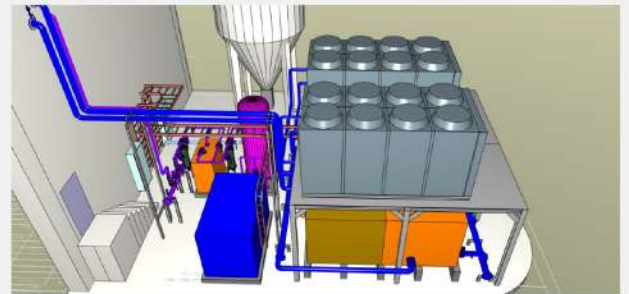
01. Investigation & Proposal

Provision of Solution

- ✓ Need to consider cost-effectiveness
- ✓ Consider introducing new technology
- ✓ Value engineering consultation
- ✓ Investment planning support services

02. Design

- ✓ Efficient 3D Design System
- ✓ Visual Presentation for Project Owners
- ✓ Automatic and Accurate Material Calculation
- ✓ Coordination Challenges and Integrated Design



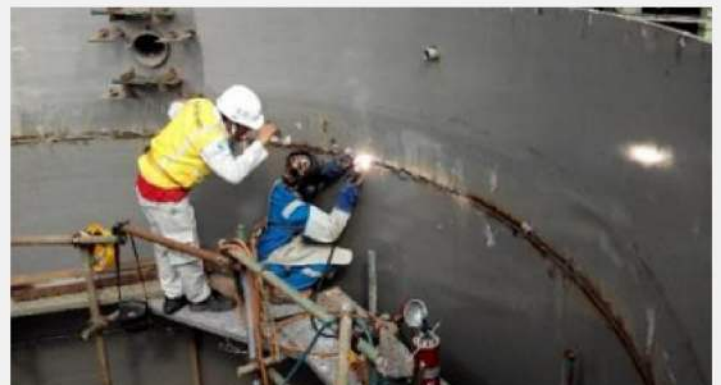
03. Procurement

- ✓ Supplying top-quality utilities, equipment, and materials for all project needs.
- ✓ Ensuring precise material tracking from fabrication to installation.
- ✓ Real-time monitoring for seamless, trustworthy procurement.

04. Factory Production

Specialized in various factory production

- ✓ Collaborating with specialized factories for quality equipment construction.
- ✓ Ensuring quality, timely delivery, cost control, and accurate product drawings.
- ✓ Setting inspection items early and conducting witness checks as needed.





05. Construction

Comprehensive On-Site Construction Services for Precision and Efficiency

- ✓ Delivering efficient construction directly at your location.
- ✓ Overseeing logistics, workforce, and quality monitoring for seamless results.
- ✓ Ensuring timelines, budgets, and environmental standards are met.

06. Commissioning

Protect workers and keep promises to customers

- ✓ Ensuring daily construction and commissioning excellence in every project.
- ✓ Developing, executing, and reviewing work plans to prevent injuries.
- ✓ Anticipating conditions in commissioning to avoid accidents.
- ✓ Implementing inspections to ensure equipment capability and quality.



07. Maintenance

Ensuring Optimal Factory Performance Through Comprehensive Maintenance Services

- ✓ Maintain factory operations to ensure consistent productivity and profitability.
- ✓ Prevent downtime with comprehensive and forward-thinking maintenance services.
- ✓ Keep every aspect of your facility running at peak efficiency.

Client Collaboration List

2023

PT Heinz ABC Indonesia

PT Tirta Investama
(Danone Aqua)

PT Aqua Golden Mississippi
(Danone)

PT NSK Bearings Manufacturing
Indonesia

PT Kyowa Indonesia

PT Indonesia Epson Industry

PT Panasonic ICI

PT KSAP Indonesia (Kumon)

PT Kaneka Foods Indonesia

PT Indonakano

PT Takenaka Indonesia

PT Takenaka (Seirokya)

PT Penta-Ocean
Construction (Itomol)

PT DJK Indonesia
(Glico Manufacturing Indonesia)

PT Chiyoda International
Indonesia (Freeport McMoRan)

PT Asahi Mass Flat Glass

PT Indopoly Swakarsa
Industry Tbk

2024

PT Chiyoda International
Indonesia

PT Indonesia Epson Industry

PT NSK Bearings Manufacturing
Indonesia

PT Kyowa Indonesia

PT Garudafood Putra Putri
Jaya Tbk

PT Heinz ABC Indonesia

Sidel Blowing & Services

PT DJK Indonesia
(Ajinomoto Indonesia)

PT Indoagri Daito Cacao

PT Kaneka Foods Indonesia

PT Asahi Mass Flat Glass

PT Freeport Indonesia

PT DJK Indonesia
(Glico Manufacturing Indonesia)

PT Indopoly Swakarsa
Industry Tbk

PT KSAP Indonesia (Kumon)

PT Takenaka (Seirokya)

PT Tirta Sibyakindo
(Danone Aqua Brastagi)

PT Panasonic ICI

PT Indonesia Toray Synthetics

PT Cabot Indonesia

PT Penta-Ocean
Construction (Itomol)

PT Supernova Flexible
Packaging

PT Indonakano
(Minda ASEAN Automotive)

2025

PT Chiyoda International
Indonesia

PT NSK Bearings Manufacturing
Indonesia

PT Kyowa Indonesia

PT Garudafood Putra Putri
Jaya Tbk

PT Heinz ABC Indonesia

PT Ajinomoto Indonesia

PT Kaneka Foods Indonesia

PT Asahimas Flat Glass

PT Freeport Indonesia

PT DJK Indonesia
(Glico Manufacturing Indonesia)

PT Indopoly Swakarsa Industry Tbk

PT Tirta Investama
(Danone Aqua Citeureup & Ciherang)

PT Indonakano
(Minda ASEAN Automotive)

PT Tirta Sibyakindo
(Danone Aqua Brastagi)

PT Panasonic ICI

PT Indonesia Toray Synthetics

PT Mulia Boga Raya
(Prochiz)

PT Indonakano
(Heinz ABC)

PT Grid Solutions Indonesia

PT Kino Indonesia

PT Kiyokuni Indonesia

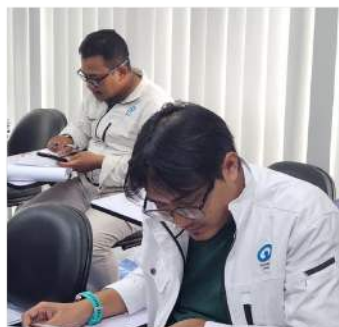
PT Surabaya Autocomp Indonesia

PT Rockwell Automation Indonesia



Human Development Training

To gain a competitive advantage, the company need to be adaptable and creative. We have been developing the employees by several activities. One of the main programs is Training Program. We have the internal and external skilled trainers who share their knowledge and skill to our employees to boost employee's performance aligned to our company's strategy.





Internship Program

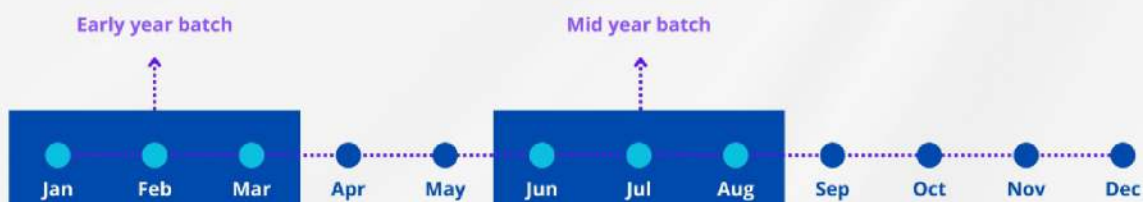
We have standardized our values since the employees join our team by our program named INTERNSHIP PROGRAM.

Our visual image of the future is to achieve targets systematically by structured employee development.

In the internship program, sure the interns will gain professional learning experience that offer practical experiences related to student studies at universities.

We choose reputable universities to get the excellent talents input of employee more compatible with our strategy, with the hope that these employees will have a high spirit of achievement, fast learners, easier to direct and can be projected into the long term as potential employees of the company.

INTERNSHIP PROGRAM PERIOD



2 interns majoring in engineering
(mechanical and electrical)



1 intern majoring in management
(law, administration, psychology,
business, management, economy
and accounting)

Awards & Certificates



Cert. No. 03 13J 2200626
 Management System of
 PT ASAHI SYNCHROTECH INDONESIA
 ISO 37001:2016



Cert. No. JQS-24-0608
 Management System of
 PT ASAHI SYNCHROTECH INDONESIA
 ISO 9001:2015



Cert. No. JES-24-0308
 Management System of
 PT ASAHI SYNCHROTECH INDONESIA
 ISO 14001:2015



Cert. No. JSH-24-0392
 Management System of
 PT ASAHI SYNCHROTECH INDONESIA
 ISO 45001:2018



CSMS AWARDS 2022



5M TBL CERTIFICATE SUBCON



20 MILLION MANHOURS



30 MILLION MANHOURS

Health, Safety & Environment

4.838.011 Safe Man Hours

Without Lost Time Injury In 2025



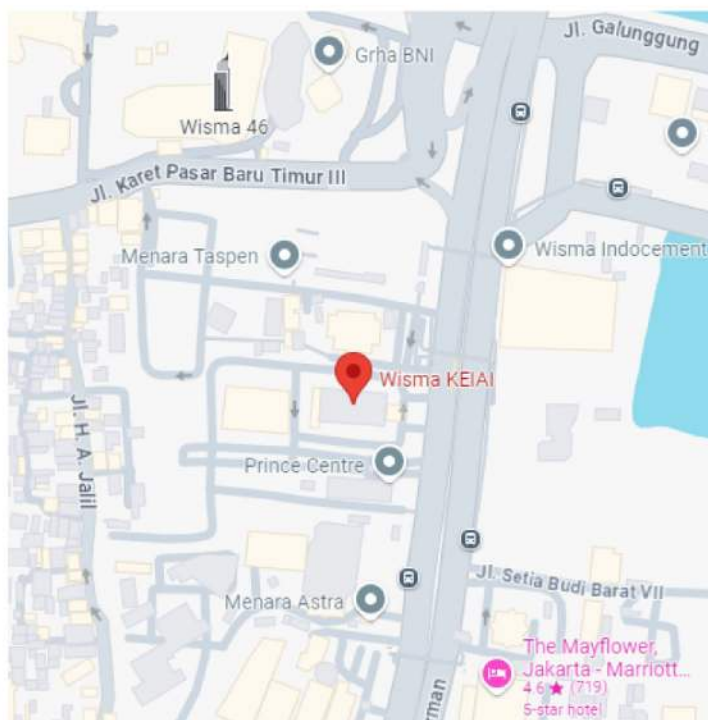
Parent Company

As a subsidiary of Asahi Synchrotech Corporation (Japan) Company headquartered in Japan, Asahi Synchrotech Indonesia offers top-tier standards in construction technology and innovation to meet industry needs.

ASAHI SYNCHROTECH CORPORATION (JAPAN)

Head Office Location

2-13-34 Konan, Minato-ku, Tokyo



Head Office of PT Asahi Synchrotech Indonesia

Address

WISMA KEIAI 8th Floor Jl. Jend. Sudirman Kav. 3 Jakarta 10220

Phone

(62-21) 5724011, 5724012

Fax

(62-21) 5723417

Email

asindo@synchrotech.co.id

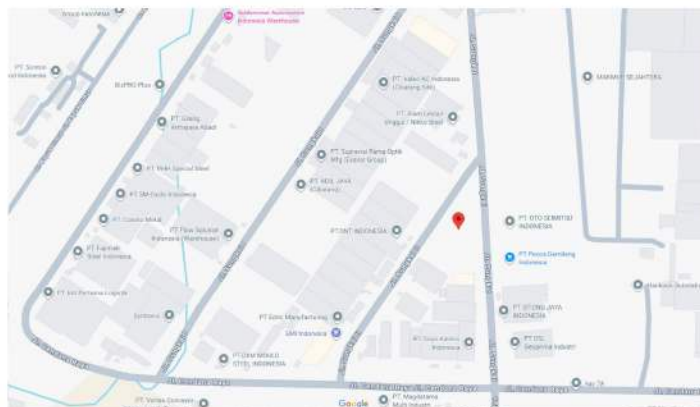
Website

synchrotech.co.id

Warehouse of PT Asahi Synchrotech Indonesia

Address

Lippo Cikarang Delta Silicon 3, Jalan Sungkai 2, Unit No. F26-19G, Kab. Bekasi, Jawa Barat





Synchrotech
Indonesia

SASARAN ANTI PENYUAPAN

1. Tidak ada kasus penyuapan (*Zero Bribery*).
2. 100% penandatanganan Pakta Integritas oleh seluruh karyawan dan rekan bisnis.
3. Meningkatkan kesadaran dan keterlibatan seluruh rekan bisnis dalam Sistem Manajemen Anti Penyuapan melalui program sosialisasi anti penyuapan minimal satu kali pelaksanaan dalam setahun.
4. Meningkatkan kesadaran dan kompetensi seluruh pegawai dalam Sistem Manajemen Anti Penyuapan melalui program sosialisasi dan pelatihan terkait anti penyuapan minimal dua kali pelaksanaan dalam setahun.

Jakarta, 06 Januari 2025

 PT. Asahi Synchrotech Indonesia

Yuichi Tamaoki

Direktur



Synchrotech
Indonesia

KEBIJAKAN ANTI PENYUAPAN

PT ASAHI SYNCHROTECH INDONESIA berkomitmen agar setiap karyawan, para pemangku kepentingan dan pihak terkait lainnya yang berada di bawah kendali PT ASAHI SYNCHROTECH INDONESIA untuk:

1. *Melarang untuk menawarkan, menjanjikan, memberikan, menerima atau meminta suap;*
2. Memastikan kepatuhan terhadap Peraturan dan Regulasi Anti Penyuapan yang berlaku dilakukan secara menyeluruh;
3. Melakukan harmonisasi anti penyuapan dalam upaya mencapai Tujuan PT ASAHI SYNCHROTECH INDONESIA;
4. Menyediakan kerangka kerja untuk menetapkan, mengkaji, dan mencapai Tujuan Anti Penyuapan;
5. Memenuhi persyaratan ISO 37001:2016 Sistem Manajemen Anti Penyuapan;
6. *Mendorong peningkatan kepedulian karyawan untuk melaporkan setiap pelanggaran melalui kanal Whistleblowing System (WBS) dengan itikad baik, atau atas dasar keyakinan yang wajar, tanpa takut tindakan balasan;*
7. Secara berkala dan berkesinambungan menyempurnakan Kebijakan, Tujuan, dan perangkat Sistem Manajemen Anti Penyuapan lainnya;
8. Menjamin keberadaan, wewenang dan independensi Fungsi Kepatuhan Anti Penyuapan;
9. Menerapkan sanksi dan konsekuensi lain kepada karyawan jika tidak mematuhi Kebijakan Anti Penyuapan;
10. Menyediakan, men-sosialisasikan dan mengkomunikasikan Kebijakan, Tujuan, dan perangkat Sistem Manajemen Anti Penyuapan lainnya;


Jakarta, 06 Januari 2025

PT ASAHI SYNCHROTECH INDONESIA

Dewan Pengarah,

Manajemen Puncak,


 PT. Asahi Synchrotech Indonesia
Yuichi Tamaoki
Direktur


Sugeng Rusdianto
General Manager

KEBIJAKAN MK3L

PT Asahi Synchrotech Indonesia sebagai perusahaan teknik yang menyediakan proyek-proyek yang sangat produktif, kami berkontribusi terhadap pembangunan Indonesia.

Kami akan terus memberikan nilai perusahaan yang berkelanjutan kepada pelanggan, karyawan, *supplier* dan *vendor* kami.

Dalam rangka mewujudkan visi dan mencapai tujuan tersebut, maka manajemen dan karyawan PT Asahi Synchrotech Indonesia menerapkan sesuai dengan persyaratan internasional ISO 9001, ISO 14001, ISO 45001 dan ISO 37001 dan peraturan perundangan yang terkait lainnya.

Untuk memastikan pencapaian tujuan tersebut PT Asahi Synchrotech Indonesia berupaya dan berkomitmen dengan cara ***KUAT***.

Kualitas hasil pekerjaan sebagai perusahaan *engineering* dan pelaksana konstruksi mekanikal dan elektrikal memberikan informasi dan produk yang memuaskan pelanggan dengan lebih cepat.

Utamakan keselamatan dan kesehatan kerja serta turut serta menjaga kelestarian lingkungan hidup dalam setiap pelaksanaan pekerjaan dengan pemenuhan peraturan yang berlaku dan berkolaborasi dengan berbagai *supplier* dan *vendor* untuk memberikan kualitas yang konsisten kepada pelanggan.

Aktif meningkatkan dan mengembangkan kemampuan sumber daya manusia untuk menghadirkan produktivitas proyek tertinggi di Indonesia.

Terus meningkatkan kompetensi untuk menunjang Sistem Manajemen Mutu, K3 dan Lingkungan secara berkesinambungan dan membudayakan kedisiplinan yang tinggi dalam perusahaan.

Kebijakan ini harus disadari dipahami dan dilaksanakan oleh seluruh jajaran manajemen, karyawan, *supplier* dan *vendor* yang bekerja atau berhubungan dengan PT Asahi Synchrotech Indonesia.

Jakarta, 06 Januari 2025



PT. Asahi Synchrotech Indonesia

Yuichi Tamaoki
Direktur

Company Profile

To Be The Company Chosen by Challenge & Creation

Head Office PT Asahi Synchrotech Indonesia

WISMA KEIAI 8th Floor Jl. Jend. Sudirman Kav. 3 Jakarta 10220

Phone : (62-21) 5724011, 5724012

Fax : (62-21) 5723417

Email : asindo@synchrotech.co.id

